

FILE: P:\2023\223331\CAMP COLTON\DWG\VB-223331\_CAMP COLTON.DWG ABORLING  
PLOTED: Oct 23, 2023--10:51am

COORDINATE SYSTEM DETAILS

LINEAR UNIT: INTERNATIONAL FEET  
GEODETIC DATUM: NAD 83 (2011)  
VERTICAL DATUM: NAVD 88, REFERENCED FROM SWI CONTROL POINT "1000"  
SYSTEM: ARIZONA STATE PLANE 1983  
ZONE: ARIZONA CENTRAL (0202)  
PROJECTION: TRANSVERSE MERCATOR  
LATITUDE OF GRID ORIGIN: 31° 00' 00" N  
LONGITUDE OF CENTRAL MERIDIAN: 111° 55' 00" W  
NORTHING AT GRID ORIGIN: 0 FT  
EASTING AT CENTRAL MERIDIAN: 70,000 FT  
CENTRAL MERIDIAN SCALE FACTOR: 0.9999 (EXACT)

LOCAL SITE SETTINGS:  
LATITUDE: 35.328261320° N  
LONGITUDE: 111.731943475° W  
HEIGHT: 8518.720  
GROUND SCALE FACTOR: 1.000504124

ALL MEASURED DISTANCES AND BEARINGS SHOWN HEREON ARE GRID VALUES BASED ON THE PRECEDING PROJECTION DEFINITION. THE PROJECTION WAS DEFINED SUCH THAT GRID DISTANCES ARE EQUIVALENT TO "GROUND" DISTANCES IN THE PROJECT AREA.

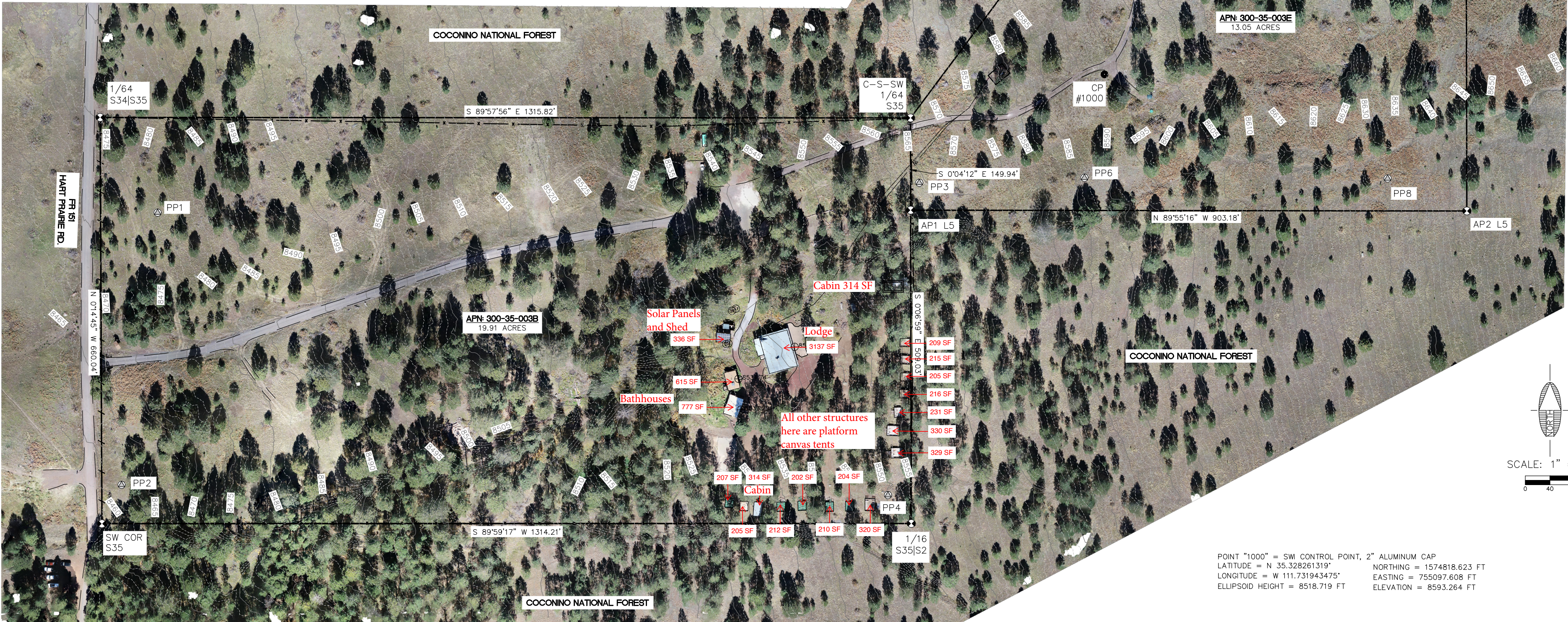
THE BASIS OF BEARINGS IS TRUE GEODETIC NORTH; NOTE THAT THE MEASURED GRID BEARINGS SHOWN HEREON (OR IMPLIED BY GRID COORDINATES) DO NOT EQUAL GEODETIC BEARINGS DUE TO MERIDIAN CONVERGENCE.

ORTHOMETRIC HEIGHTS (ELEVATIONS) WERE TRANSFERRED TO THE SITE FROM SWI CONTROL POINT "1000" USING GPS WITH NGS GEOID MODEL "GEOID18". ELEVATIONS SHOWN HEREON ARE REFERENCED TO AN NGS 'OPUS' SOLUTION AT THIS STATION.

THE SURVEY WAS CONDUCTED USING GPS REFERENCED TO THE NATIONAL SPATIAL REFERENCE SYSTEM. A PARTIAL LIST OF POINT COORDINATES FOR THIS SURVEY IS GIVEN BELOW (ADDITIONAL COORDINATES ARE AVAILABLE UPON REQUEST). LOCAL NETWORK ESTIMATES ARE GIVEN AT THE 95% CONFIDENCE LEVEL AND ARE BASED ON A LEAST-SQUARES ADJUSTMENT OF STATISTICALLY INDEPENDENT OBSERVATIONS.

TOPOGRAPHIC SURVEY

A PORTION OF THE SOUTHWEST QUARTER OF SECTION 35,  
TOWNSHIP 23 NORTH, RANGE 6 EAST,  
OF THE GILA AND SALT RIVER MERIDIAN,  
COCONINO COUNTY, ARIZONA



POINT "1000" = SWI CONTROL POINT, 2" ALUMINUM CAP  
LATITUDE = N 35.328261319° NORTHING = 1574818.623 FT  
LONGITUDE = W 111.731943475° EASTING = 755097.608 FT  
ELLIPSOID HEIGHT = 8518.719 FT ELEVATION = 8593.264 FT

Contact Arizona 811 at least two full working days before you begin excavation  
**ARIZONA811**  
Call 811 or click Arizona811.com

PRELIMINARY  
NOT FOR CONSTRUCTION,  
BIDDING OR RECORDING

REVISIONS			
NO.	DESCRIPTION	DATE	BY

**SWI**  
Shephard Wesnitzer, Inc.  
An ARDURRA Company

110 W. Dale Avenue  
Flagstaff, AZ 86001  
928.773.0354  
928.774.8934 fax  
www.ardurra.com

JOB NO:	223331
DATE:	OCT 23
SCALE:	1"=80'
DRAWN:	ADB
DESIGN:	
CHECKED:	

CAMP COLTON

COCONINO COUNTY,  
ARIZONA

TOPOGRAPHIC SURVEY

DRAWING NO.	
T1	
SHT NO.	OF
1	1